

## Who we are and what we do

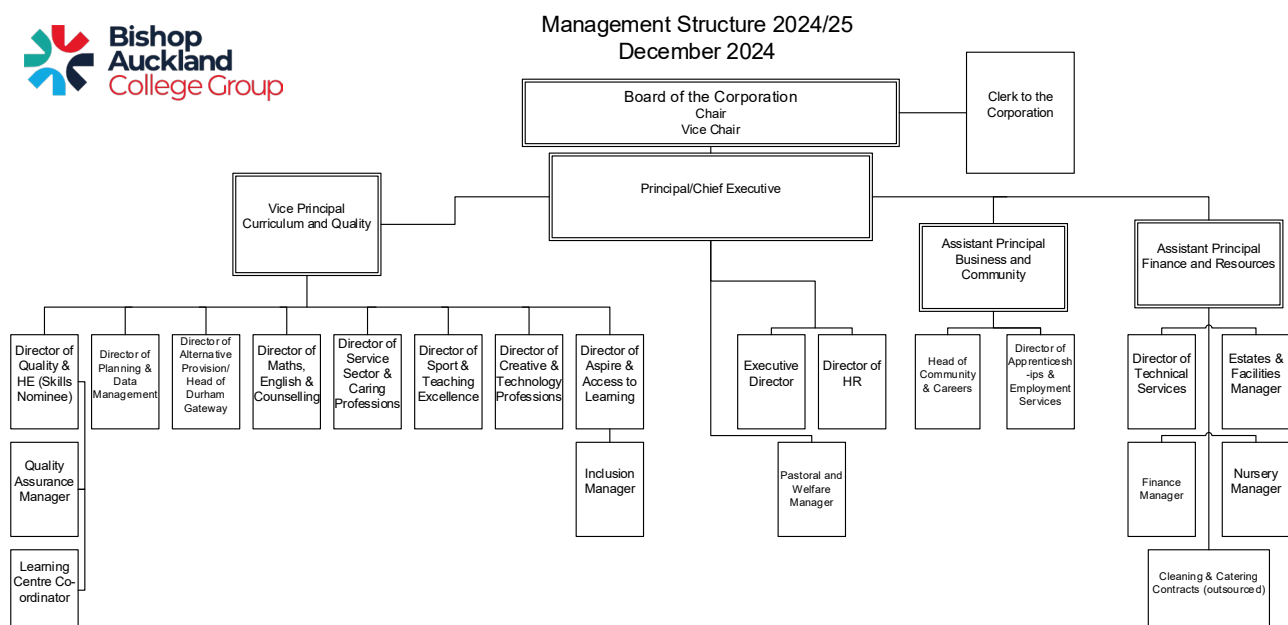
This section covers organisational information, structures, locations and contacts.

### Legal Framework

The Corporation of Bishop Auckland College is a charity but is exempt from registration and oversight by the Charities Commission. The Secretary of State for Business Innovation and Skills is the Principle Regulator of Further Education Colleges with a compliance objective to do all they reasonably can to promote compliance by trustees of the charities:

- [Charities Act 1993](#)
- [Education Act 2011](#)
- [Education Reform Act 1988](#)
- [Further and Higher Education Act 1992](#)
- [Learning and Skills Act 2000](#)
- [Apprenticeships, Skills, Children and Learning Act 2009](#)

### How Bishop Auckland College is organised



### Our Group: *The growing Bishop Auckland College family*

Bishop Auckland College originated in 1993 and has a long and proud history as a very successful former technical college serving the mining, engineering and manufacturing industries. The College has evolved with the changing time and is now diversifying in order to respond to areas of specific need with highly specialist provision. We offer a wide range of higher education programmes, working in collaboration with nationally recognised awarding and validating organisations. This includes our range of foundation degrees, full honours degrees and masters level qualifications validated by the Open University. Hence, the Bishop Auckland College Group is made up of a number of organisations, at varying stages of development; these are all connected by a shared mission, ethos and set of core values and offer students exceptional opportunities for progression and employment.

The Group presently comprises:

- Bishop Auckland College – a general FE college, with its primary campus in Bishop Auckland. The College also operates from Learning Centres in Bishop Auckland town centre and Newton Aycliffe Business Park, as well as various community venues throughout South West Durham.
- South West Durham Training – a specialist engineering and manufacturing training provider located within the Newton Aycliffe Business Park.
- Durham Gateway Academy – an alternative provision free school which opened in September 2018
- Auckland Academy – a joint venture with the Auckland Castle Trust, providing apprenticeship and other training provision to support the economic regeneration of Bishop Auckland.
- Bishop Auckland College Nursery (Ofsted, Good 2019) – on-site nursery and pre-school provision accommodating up to 130 children, serving external commercial clients as well as College students and staff.
- McIntyre Centre – The McIntyre Centre is an exciting new development for the Bishop Auckland College Group. Located in the town centre, the iconic Grade II listed building has been at the heart of the community for more than 150 years.

### **Location and Contact details**

Information on how to locate or contact the College can be found under the [Contact Us](#) tab, on the bottom of the College website homepage.

### **Student Activities**

Information on the various student activities that take place at Bishop Auckland College can be obtained through a Freedom of Information Request by emailing [quality@bacoll.ac.uk](mailto:quality@bacoll.ac.uk).

### **History of Bishop Auckland College**

In 2018 the College celebrated its 60<sup>th</sup> anniversary. During this time the College has established itself as a first class provider of further and higher education in South West Durham.

Bishop Auckland College began life as a Technical Institute with classes being run in the Mechanics Institute in Victoria Avenue and other town centre locations. In September 1950 the Technical Institute was opened in the old Railway Offices, Station Approach before moving to Woodhouse Lane as the Technical College in 1958 where it has been transforming lives ever since. Things have moved on a lot since that period and we have been in a state-of-the-art building with fantastic facilities, still on Woodhouse Lane, Bishop Auckland, since 2007. As the name suggests, the College opened originally as a technical and training facility to provide courses for adults; we have grown from 250 part time adult students in 1950/51 to over 4000 in 2018/19. Enrolment in 1950 was 250 part time and evening students.

It was the demand for engineering courses needed by local industry that led to the first buildings for the Bishop Auckland Technical College (new Bishop Auckland College) on Woodhouse Lane. This was formerly opened by County Alderman F Hunt JP on Wednesday 26 February 1958 at 2:30pm.

Bishop Auckland College serves the local urban, semi-rural and rural areas of South Durham, an area stretching approximately 300 square miles, approximately 40% of the county. The population of South Durham is around 180,000 and is spread across the three former districts of Weardale,

Teesdale and Sedgefield. The local economy was historically based upon coal and iron mining, railways and farming.

You can study a wide range of subjects from beginners or interest level right up to university level courses, right on your doorstep. There is lots of free parking, easy access and a nursery on site open to students, staff and the general public.

Adult training for careers, life and leisure continues to be a huge part of what we do. Since 2014 we have also offered a range of engineering and plumbing courses at South West Durham Training (SWDT) in Newton Aycliffe. SWDT is part of the Bishop Auckland College Group.